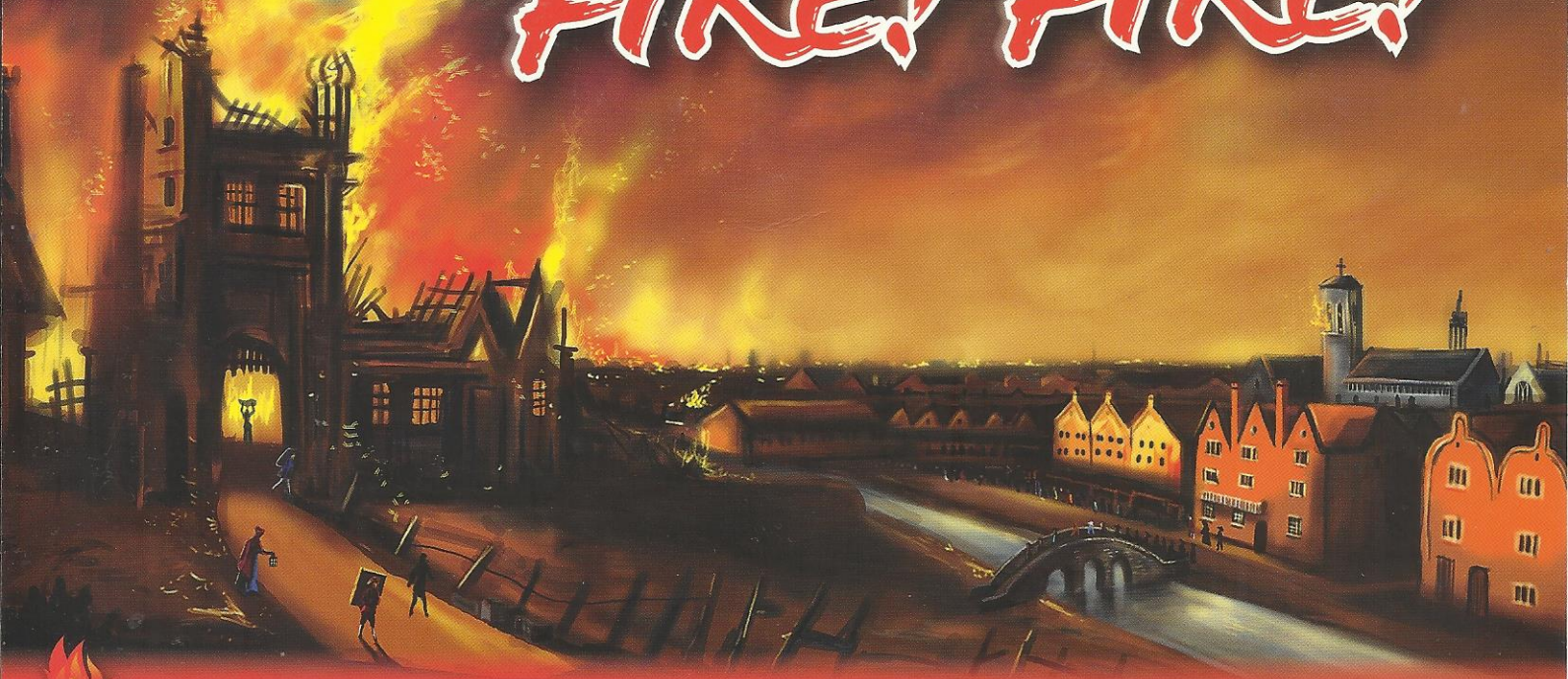


FIRE! FIRE!



- 1 Many years ago in London, a massive fire swept through the city.
- 2 It began in a baker's shop in Pudding Lane. The fire started in the early hours of the morning when most people were still in bed. No-one realised just how big this fire would get!
- 3 In those days, many of the houses and shops were close together and all of them were made of wood. The fire burned easily as it jumped from house to house.
- 4 The people tried hard to put out the fire. They threw buckets of water onto the flames but it was no use, the fire was too powerful and very fierce.
- 5 A strong wind helped the fire to spread quickly. It burned for four whole days. Hundreds of homes and shops were destroyed. Where would the people live? What would they do?
- 6 The people of London worked hard to build the city again. They had learned a very important lesson. This time, they would use stone instead of wood and they would leave wider spaces between the buildings.

1. In Paragraph 1, the word *massive* means:
(a) *marvellous.*
(b) *enormous.*
(c) *horrible.*

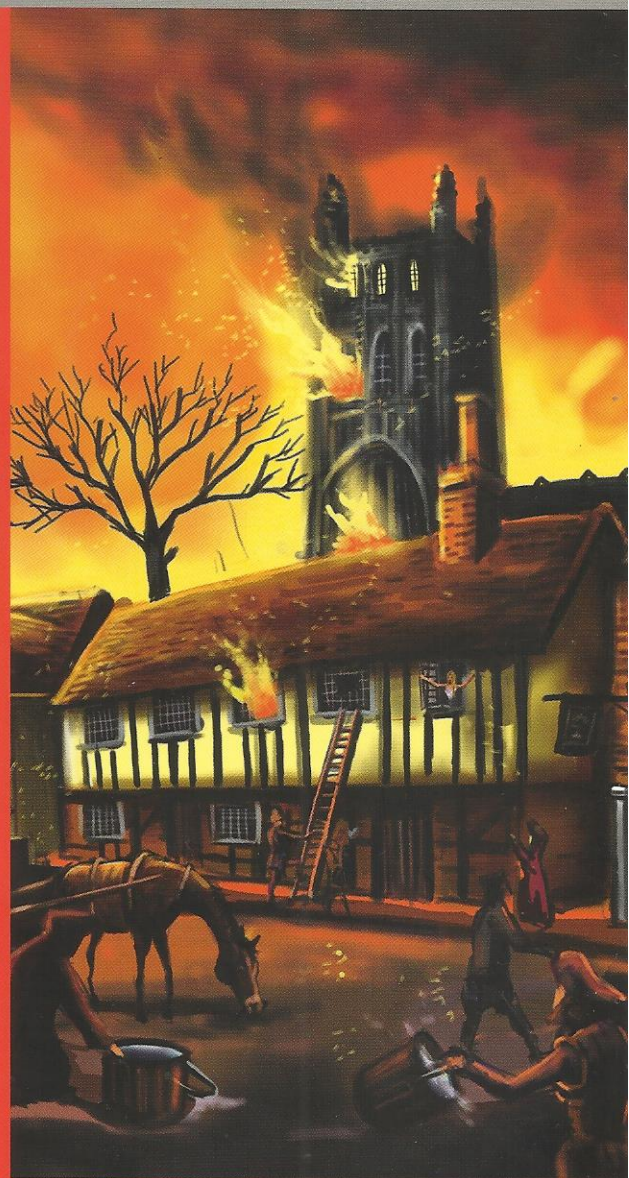
2. The fire broke out in a _____ shop.
(a) *butcher's*
(b) *grocer's*
(c) *baker's*

3. The fire burned so well because the buildings were:
(a) *old.*
(b) *wooden.*
(c) *wet.*

4. If there had been no wind, the fire could have been put out:
(a) *sooner.*
(b) *in four days.*
(c) *later.*

5. Stone was used to rebuild the city because it:
(a) *doesn't burn.*
(b) *is cheaper.*
(c) *is easier to find.*

6. In Paragraph 5, the word *it* means the:
(a) *homes.*
(b) *wind.*
(c) *fire.*



SOMETHING EXTRA

★ Unjumble the words to find the names of some building materials.

ntoes

krbic

tamel

troecnec

★ Write the list in alphabetical order.