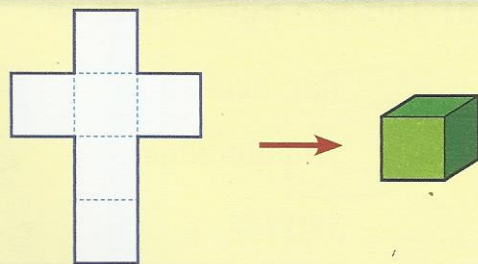


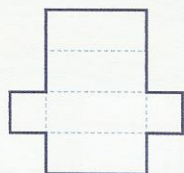
Shape nets

When a 3-D shape is flattened out, we see its net.
This is a **shape net** of a cube.
When folded, it makes a cube.

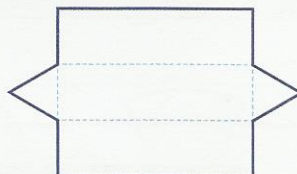


1. What solid shapes do these nets make?

(a)



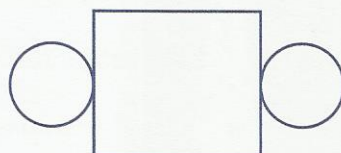
(b)



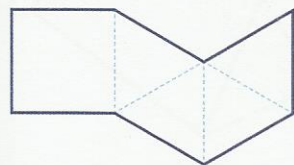
(c)







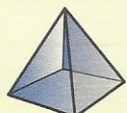
(d)



(e)



2. Complete this table.

		Flat faces	Curved faces	Edges	Vertices
(a)	cube 	6	0		
(b)	cuboid 				
(c)	cylinder 				
(d)	cone 				
(e)	pyramid 				
(f)	triangular prism 