

46 – Belonging to a Group

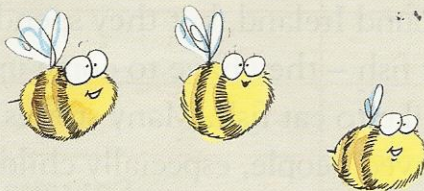
To Do

Do you know what the members of these groups have in common?
The first one is done for you.

Group				
<i>flowers</i>	iris	carnation	rose	bluebell
	elm	ash	oak	hazel
	John	Barry	Liam	Brian
	spaniel	collie	terrier	poodle
	France	Spain	Germany	Denmark
	Limerick	Tipperary	Offaly	Leitrim
	Cork	Belfast	Limerick	Derry
	Venus	Pluto	Jupiter	Saturn
	arm	leg	wrist	neck
	shirt	trousers	socks	jumper
	teach	doras	fuinneog	crann

To Do

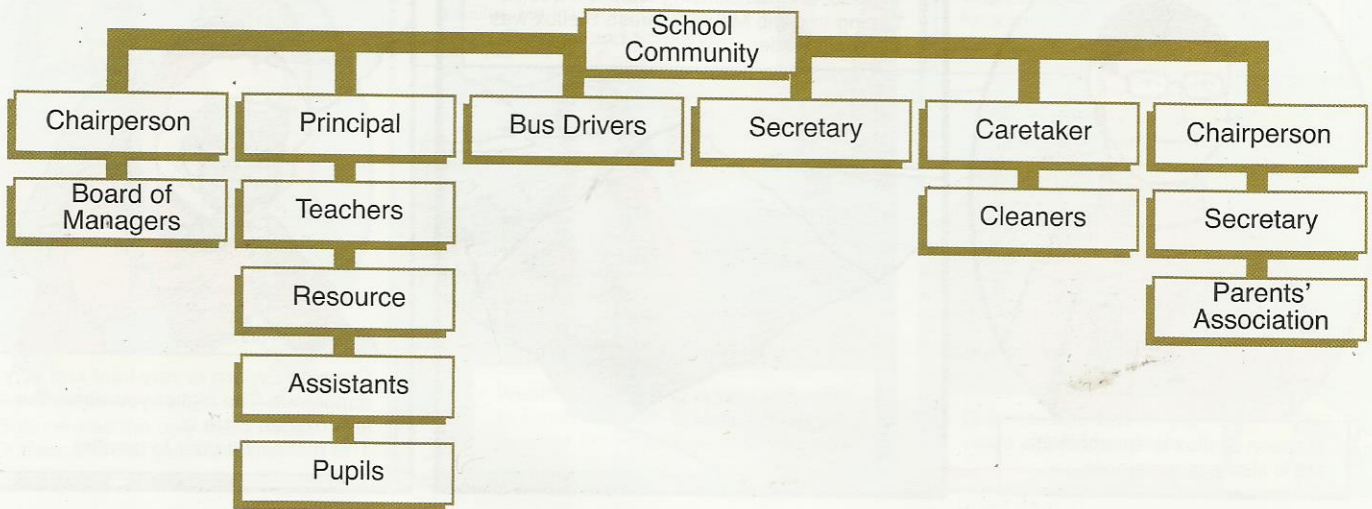
“Two heads are better than one,” is an old saying. Why is it sometimes better to have more than one person trying to solve a problem? In each of these pictures more than one head was busy. Who was involved, what did they create, and how did they do it?



46 – Belonging to a Group

🌸 Community

A community is a group of people working together. Look at the following example of a school community.



To Do

Who makes up your school community?

How is your community similar or different to the example above?

Each person in the school community has a part to play. You, as a pupil, have responsibilities. What are they? Here are some examples:

**Obey
the rules**

**Show
respect**

Share

**Try
your best**

**Treat
others well**

Can you think of any others?

To Do

Design a coat of arms with a motto for your school. Different symbols on the coat of arms mean different things. Look at this example.

Olive branch – Peace

Colour red – Warrior

Stag – One who will not fight unless provoked

Motto – Not Too Much

